

PLEASE READ THESE INSTRUCTION CAREFULLY PRIOR TO INSTALLATION

Important Note : Please inspect your spoiler for proper fit before painting or mounting.
Parts which have been sanded, painted, drilled, or modified cannot be return.

TOOLS & MATERIALS NEEDED

1. Drill (Electric or Cordless)
2. 3/32" (2mm) drill bit
3. 9/32" (6.5mm) drill bit
4. Philip head screwdriver
5. 12 volt battery source (You can use a car battery or charger)
6. Masking tape
7. Small quantity of rust inhibiting primer
8. Felt tip pen
9. Electrical tape or use the included LED wire connectors

HARDWARE KIT

Supplied in the box are one spoiler & a plastic bag containing the following.

1. Set of locator strips
2. Set of M6 plain washers
3. Set of M6 screws
4. Set of pedestal gaskets

LED LIGHT TESTING

Use an independent 12 volt battery or a battery charges to test the LED. Touch one wire to each of the positive & Negative terminals. If the LED does not light, reverse the wire & try again.

NOTE : Reversing the wires will not harm the LED. Every LED has been tested prior to shipping to insure ease of Installation.

TEST FITTING

1. Carefully position the spoiler & find the most suitable location. Stand back & view the car from all angels to satisfy yourself of its fit & styling.
2. Make sure the ends of the spoiler are clear of the bodywork by a minimum of 5/32" (4mm) & that the spoiler will clear the radio/telephone antenna when the trunk is opened. If your car is equipped with a power antenna, special caution may be necessary during installation.

PAINTING

Spoilers are made of durable Polyurethane/ABS Plastic Blow Molded & finished in a high quality 2K Primer. While you may use any paint for top coat spraying, we recommend 2K paint. Inspect spoiler for imperfections. If required, use the catalyzed body filer, rub lightly with a Scotchbrite™ pad or wet sand with fine sandpaper before spraying top coat. It's advisable to test a small sample of the paint on the underside spoiler to ensure good adhesion & no solvents in the paint that react with Polyurethane & ABS Plastic Blow Molded. For best results Polyurethane & ABS Plastic Blow Molded should be air-dried, however backing up to 50 Celcius/107 Fahrenheit is acceptable.

LED CONNECTION (IF APPLICABLE)

If the car equipped with the thrid brake light, splice the wire from the LED with the thrid brake light wires

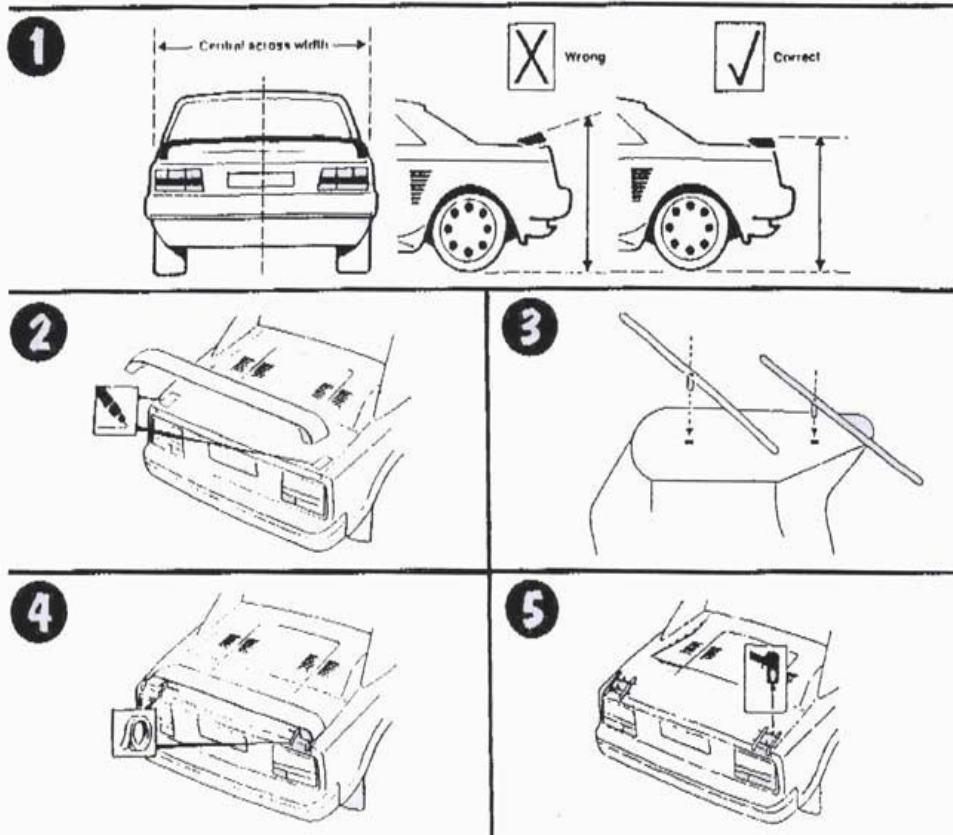
NOTE : Before permanent connection is made, test the LED by stepping on the brake pedal. If the LED does not light u
Up, reverse the wires.

If the car does not have a thrid brake light, a connection can be made using the hot wire from the car's brake lights.
Test to find the hot wire from the LED. Connect the hot wire together. The remaining LED wire should be grounded to Trunk. Secure all connections with the supplied LED wire connectors or electrical tape.

INSTALLATION

1. Clean the trunk lid & dry it thoroughly.
2. Carefully position the spoiler & find a best position. Stand back & view the car from all angles to satisfy yourself of its fit & styling.
3. When you are completely satisfied, mark the position of the spoiler on the trunk lid using a felt tip pen. Check from below to ensure that the mounting holes will clear any obstruction.
4. Insert a plastic locator strip into each of the mounting holes. A small piece of masking tape will hold it temporarily in place. The tabs should be parallel to the spoiler (See Illustration 3).
5. Tape down the tabs of the locator strips using masking tape (See Illustration 4)
6. Carefully remove the spoiler, leaving the locator strips in position.
7. Drill a 3/32" (2mm) pilot hole through the centre of the locator strip. (See Illustration 5)
8. Remove the locator strips & enlarge the holes using 9/32" (6.5mm) drill bit.
9. Locate & drill hole for LED wires.
10. Treat all holes with rust inhibiting primer.
11. Insert the fixing screws through the trunk lid into the pedestals of the spoiler, being carefull not to over tighten the screws particularly if the brige a hollow double skin.
12. Remove all metal shaving from trunk & surrounding areas.

ILLUSTRATIONS



IMPORTANT :